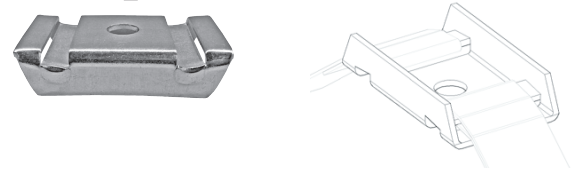


SUBMITTAL RECORD

JOB _____
 LOCATION _____
 SUBMITTED TO _____
 SUBMITTAL PREPARED BY _____
 APPROVED BY _____
 DATE _____



**Submittal Form
Spiral Buckle**



DESCRIPTION

This spiral buckle is designed to suspend round and oval ductwork from ceiling joists or beams with the use of threaded rod up to 3/8" in diameter. Simply place 1" hanging strap in one side of the buckle then around the material and into the other side of the buckle. When the strap is correctly inserted through the slots, the strap is locked into the buckle by the weight of the duct.

APPLICABLE SMACNA STANDARD

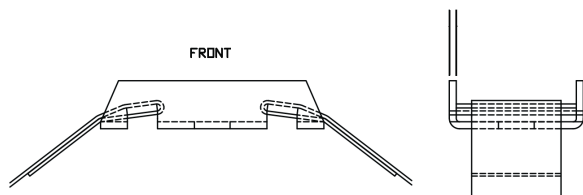
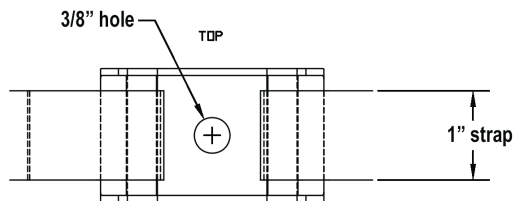
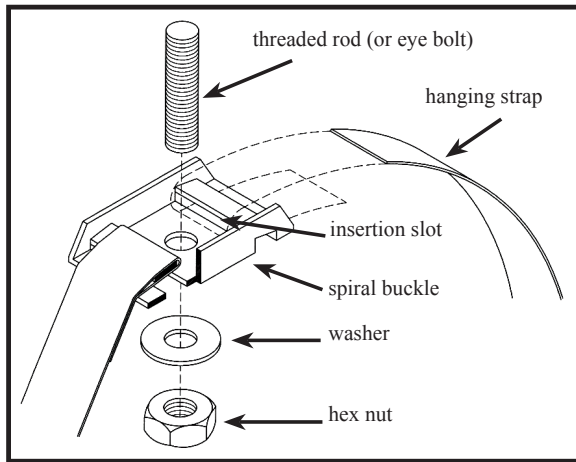
4.2.11 Hanging System Selection

The selection of a hanging system should not be taken lightly not only because it involves a significant portion of the erection labor, but also because an inadequate hanging system can be disastrous. In any multiple hanging system, the failure of one hanger transfers that load to adjacent hangers. If one of these fail, an even greater load is transferred to the next. The result is a cascading failure in which an entire run of duct might fail.

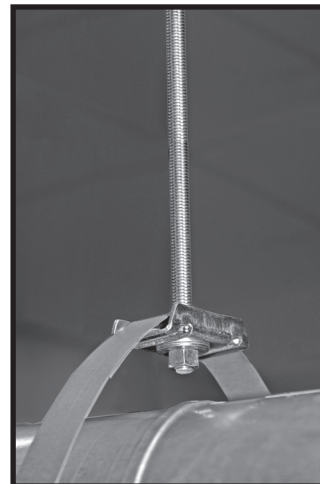
FEATURES

- For the suspension of circular ductwork and/or equipment using hanger strap suspended by threaded rod.
- Heavy Galvanized Steel
- Conforms to SMACNA duct suspension standards per HVAC-DCS 3rd Edition Table 5-1 and Figure 5-5. Equates to illustrated suspension method utilizing steel hanger strap and load rated fasteners.

There are many hanger alternatives, especially in the upper attachments. Besides structural adequacy, the contractor's choice of hanging system must also take into account the particulars of the building structure, the skills of the workmen, the availability of tooling, and the recommendations of the fastener manufacturer. Because of these variables, it is suggested that the hanging system be the contractor's choice, subject to the approval of the mechanical engineer.



Item #	Code	Description	Safe Working Load	Packaging
30340	DSB1	Dyna-Tite Spiral Buckle	560 lbs. (254 kg)	50/box



Spiral Buckle with threaded rod



Spiral Buckle with optional 3/8" eye bolt and the Dyna-Tite Wire Rope Suspension System

Please see our Dyna-Tite testing and warnings webpage for the most detailed list of warnings:
<http://www.durodyne.com/DTTesting.php>

Duro Dyne East Division, Bay Shore, NY
 Duro Dyne Midwest Division, Fairfield, OH
 Duro Dyne West Division, Fontana, CA
 Duro Dyne Canada, Lachine, Quebec, Canada

631-249-9000 Fax: 631-249-8346
 513-870-6000 Fax: 513-870-6005
 562-926-1774 Fax: 562-926-5778
 514-422-9760 Fax: 514-636-0328

www.durodyne.com E-mail: durodyne@durodyne.com



©2016 Duro Dyne Corporation
 Printed in USA 06/16
 BO030423