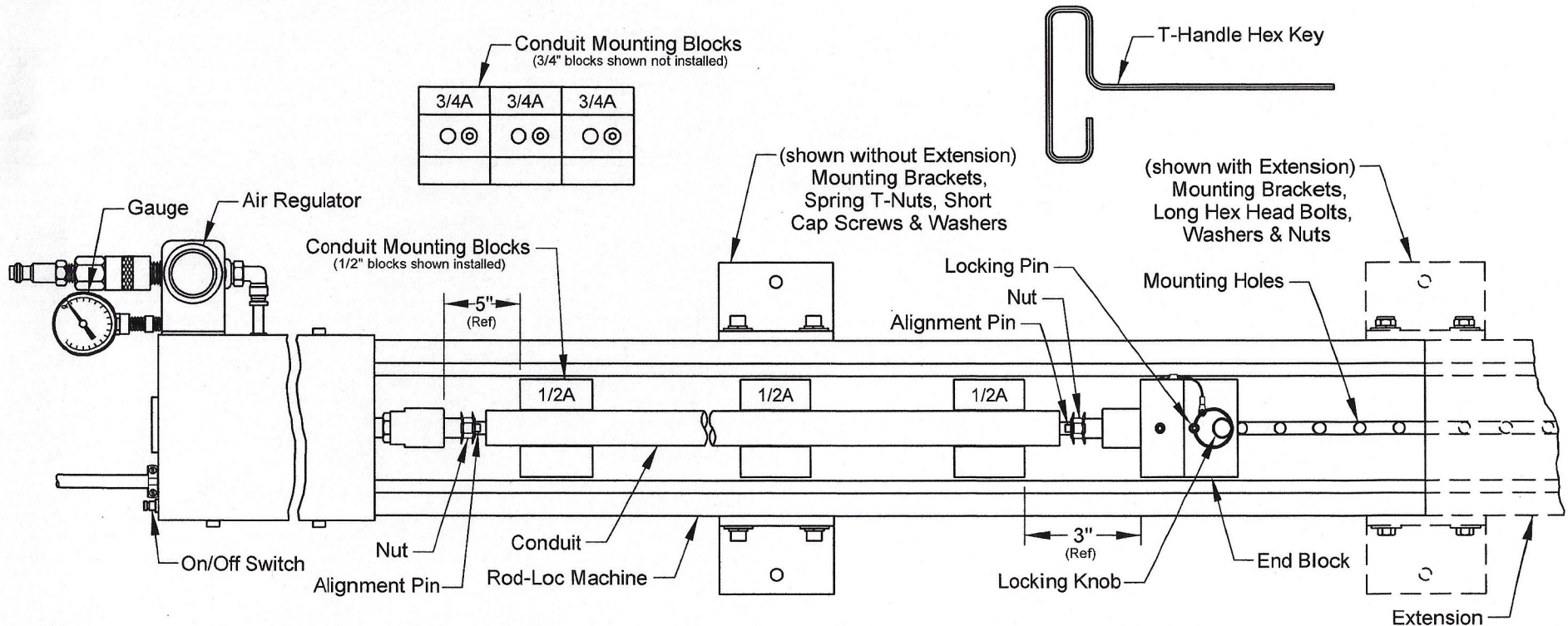


Assembly Instructions: (For Operator Safety)

- 1)- Without **Extension**: The **Rod-Loc Machine** should be secured to a flat working surface using the **Mounting Brackets** supplied. Attach the **Mounting Brackets** using the **Spring T-Nuts**, **Short Cap Screws** and **Washers**.
- 2)- With **Extension**: The **Rod-Loc Machine** should be secured to a flat working surface using the **Mounting Brackets** supplied. Attach the **Mounting Brackets** to the **Rod-Loc Machine** and the **Extension** using the **Long Hex Head Bolts**, **Washers** and **Nuts**.
- 3)- For operator safety: Secure the **Rod-Loc Machine** to the flat working surface using the **Short Hex Head Bolts**, **Washers** and **Nuts** supplied.

Instructions for use: (NOTE: The Rod-Loc Machine is shipped with all of the Conduit Mounting Blocks installed)

- 1)- To set-up the **Conduit Mounting Blocks**: Remove the **End Block** first by loosening but **NOT** removing the **Locking Screws**. Pull the **Locking Pin** up and Slide the **End Block** out. Loosen but **DO NOT** remove the screws on the **Conduit Mounting Blocks** to slide them out; set the appropriate **Conduit Mounting Blocks** as needed for either **1/2"** or **3/4"** **Conduit**. Slide the **End Block** back on to match the conduit length as shown below (ensure the **Locking Pin** is properly set in a **Mounting Hole** then secure the **Locking Knob**). The **T-Handle Hex Key** can be used for all screws. Position the **Conduit Mounting Blocks** at each end as shown in the reference dimensions and center the one in the middle.
- 2)- Ensure the **Gauge** of the **Air Regulator** is set to 70 PSI (minimum).
- 3)- Depress the **On/Off Switch** to activate the **Rod-Loc Machine** and insert the **Nuts** securely.

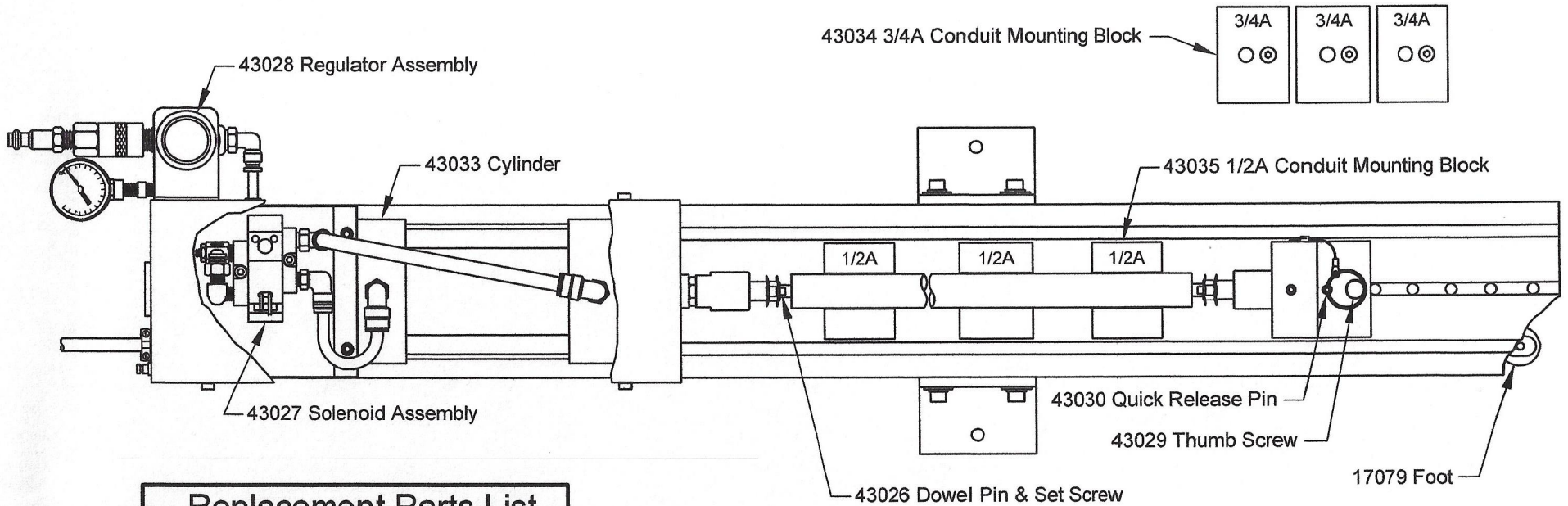


Please contact our Technical Service Department with any questions at - Ph: 631-249-9000 / Fax: 631-249-8346

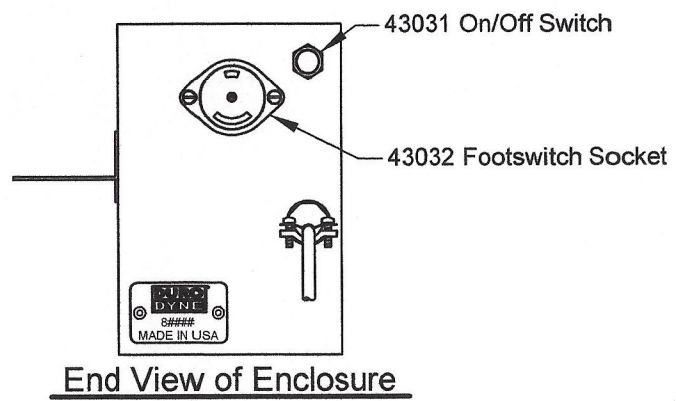
THE GREATEST NAME IN SHEET METAL NECESSITIES



WVDL-1234A Rod-Loc Machine Replacement Parts List & Locations



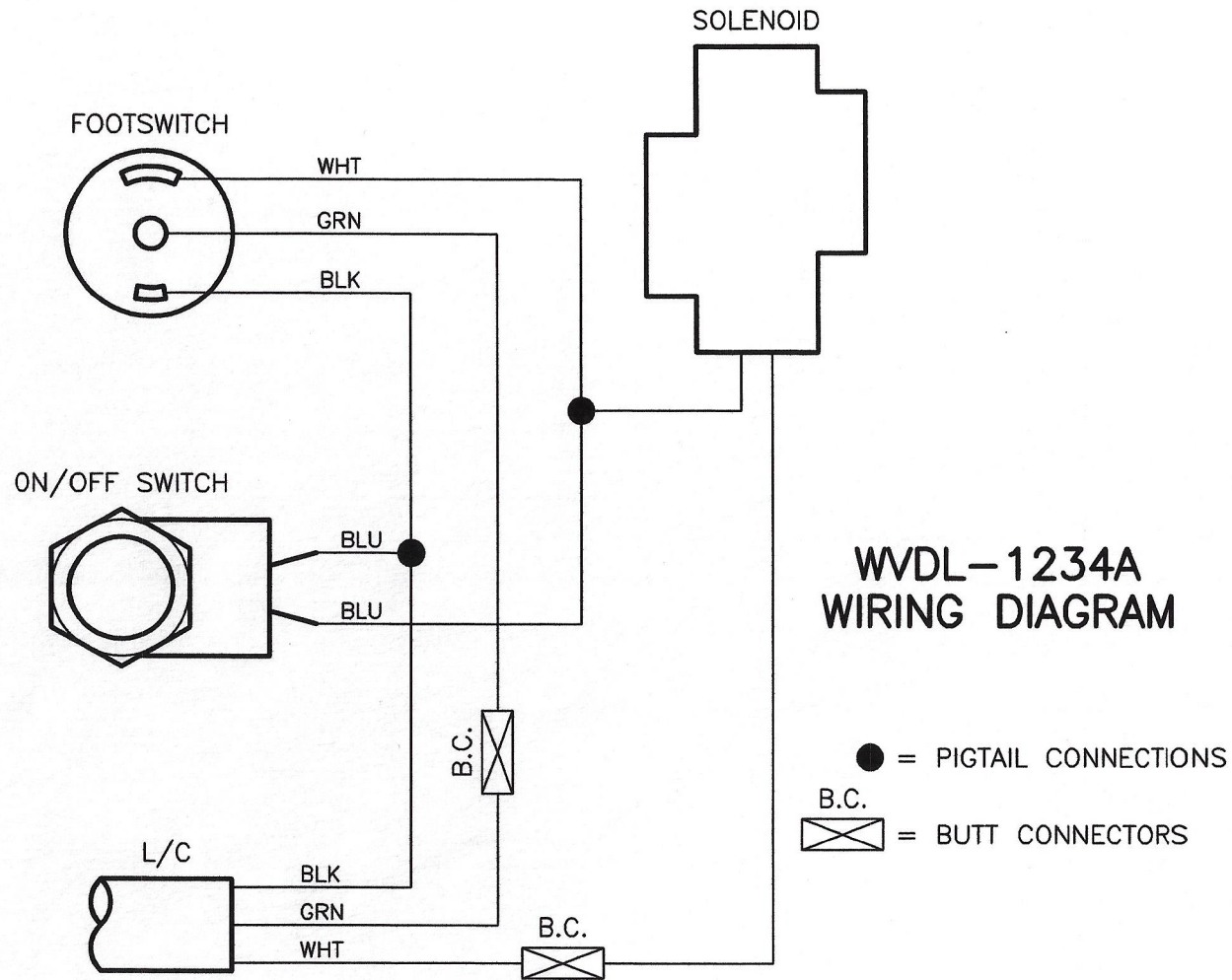
Replacement Parts List	
Part No.	Description
43026	Dowel Pin & Set Screw
43027	Solenoid Assembly
43028	Regulator Assembly
43029	Thumb Screw
43030	Quick Release Pin
43031	On/Off Switch
43032	Footswitch Socket
43033	Cylinder
43034	3/4A Conduit Mounting Block
43035	1/2A Conduit Mounting Block
17079	Foot



Please contact our Technical Service Department with any questions at - Ph: 631-249-9000 / Fax: 631-249-8346

THE GREATEST NAME IN SHEET METAL NECESSITIES

LATEST: 2-27-18/A275-01-36



Please contact our Technical Service Department with any questions at - Ph: 631-249-9000 / Fax: 631-249-8346

THE GREATEST NAME IN SHEET METAL NECESSITIES