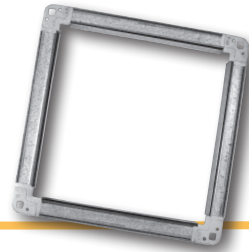




# H SYSTEM

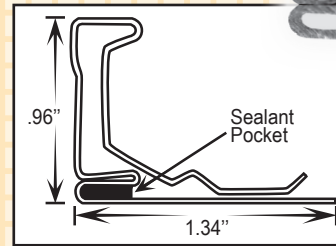
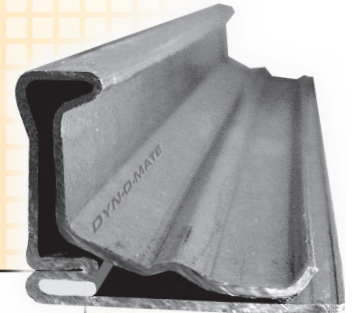


Flange is designed to strengthen the duct wall and connect duct sections together. All Duro Dyne Dyn-O-Mate H Flange is furnished with an **integrated sealant pocket** for a secure air tight fit and meets SMACNA class H for transverse joints (Aluminum). Bundles of 20ft. lengths are available **only** with a Full Truckload order and most styles are available in **specialty metals**. All Dyn-O-Mate Corners that work in the H System are a skid qty of 48 boxes.

## DOMH FLANGE *H Style (22 gauge) for low-medium pressure and residential applications*

- Designed to strengthen the duct wall and connect duct sections together.
- Furnished with an integrated sealant pocket for a secure air tight fit.
- Manufactured from 22-gauge steel in both 12ft. & 20ft. lengths.
- DOMH is designed for low to medium pressure or residential applications.
- Bundles of 20ft. lengths available only with a Full Truckload order.
- Specialty metal available upon request.

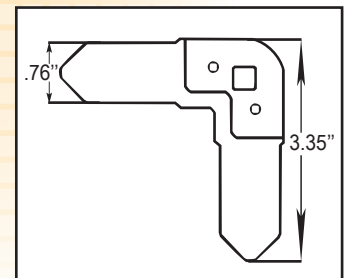
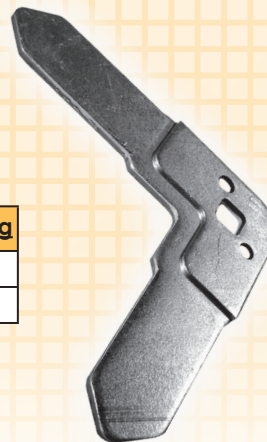
Item #	Code	Description	Packaging
21231	DOMH20	H Flange - 20ft	1000ft./Bundle
21235	DOMH12	H Flange - 12ft	1200ft./Bundle



## DDH CORNER *H Style (12 gauge)*

- DDH corners are manufactured from 12-gauge steel.
- For use with H Flange.
- Nuts and Bolts are also sold separately.

Item #	Code	Description	Packaging
21241	DDH	H Corner	250/Box
21249	DDHNB	H Corner with 1/4 in. Nut & Bolt	250/Box



Duro Dyne Corporate Headquarters, Bay Shore, NY  
 631-249-9000 • Fax: 631-249-8346  
 Duro Dyne Midwest • Duro Dyne West • Duro Dyne Canada  
[www.durodyne.com](http://www.durodyne.com) • E-mail: [durodyne@durodyne.com](mailto:durodyne@durodyne.com)

**DURO  
DYNE**®  
 © Duro Dyne Corp.  
 Printed in USA 12/7/2020