

SUBMITTAL RECORD \_\_\_\_\_  
 JOB \_\_\_\_\_  
 LOCATION \_\_\_\_\_  
 SUBMITTED TO \_\_\_\_\_  
 SUBMITTAL PREPARED BY \_\_\_\_\_  
 APPROVED BY \_\_\_\_\_  
 DATE \_\_\_\_\_



# Submittal Form

## Multi-Duct 'L' Bracket

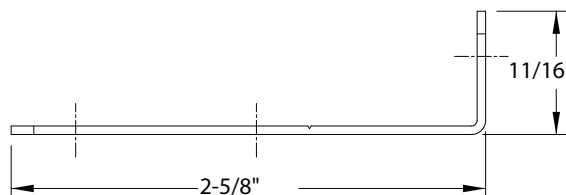
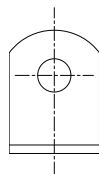
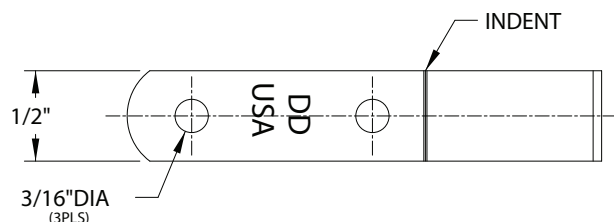
### DESCRIPTION

The L Bracket from Duro Dyne is a versatile tool for use in hanging ductwork in residential applications. This sturdy 18 Gauge bracket easily screws in ductwork and ceiling anchors to provide quick attachment points. A score line is set at 1" from the corner to assist in spacing when supply ductwork is required to be 1" away from combustibles. The score line is also a useful tool when clearance is needed for external duct wrap or can be used as a bend mark when different formations such as a Z bracket is needed. There are two pre drilled holes placed at 1" center spacing for ease of attachment when in the field or being installed overhead. The L Bracket is available in four package qty variations for your convenience. Made in the U.S.A. with U.S.A. steel.



### FEATURES

- Made in USA
- 18 ga galvanized steel
- 1" scribe for proper placement on wrapped duct
- Rounded safety corners
- Two predrilled holes at 1" center



Item #	Code	Description	Quantity
70027	MDB12	1/2in Wide Multi-Duct 'L' Bracket	100/Box
70028	MDB12Q	1/2in Wide Multi-Duct 'L' Bracket	250/Box
70029	MDB12F	1/2in Wide Multi-Duct 'L' Bracket	500/Box
70030	MDB12B	1/2in Wide Multi-Duct 'L' Bracket Bulk	1000/Box

