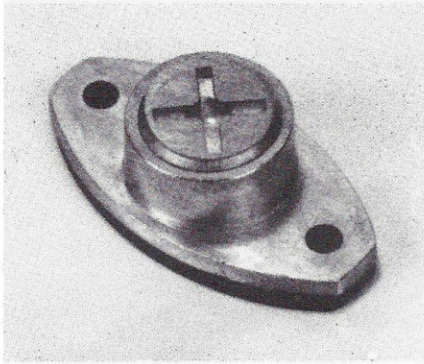
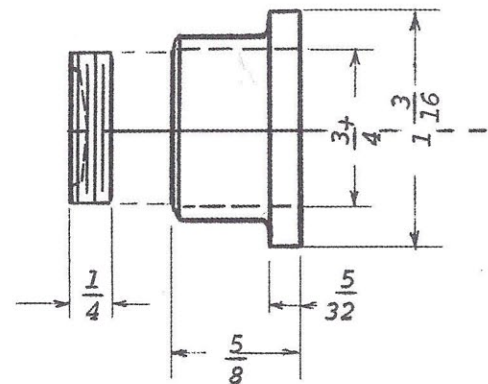
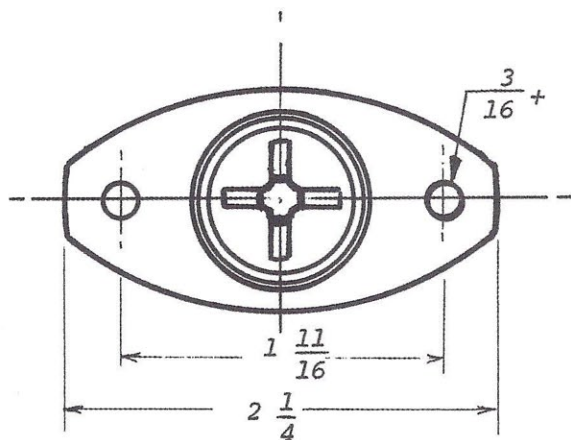


IP~4



This new, handy Test Port has been designed and produced by Duro Dyne to answer the many requests for a moderately-priced fitting to be used where the superior features of the IP-1 are not required. It offers a 3/4" diameter access to the air stream through a zamac alloy casting set on a neoprene gasket. The screw-in cap is readily removed using a standard screwdriver or 25¢ coin.

- Economical
- 3/4" diameter opening - adequate for Pitot Tube or Velometer.
- Neoprene gasket reduces leakage*
- Screw-in cap for easy access to air-stream
- Zamac alloy casting for durability and appearance
- Mount with No. 10 x 1/2 Drill Screw or No. SS-66 Pin Rivet



* NOTE: Whereas the IP-1/IP-2 is "LEAKPROOF" and may be used in High Velocity systems, most test ports are not. In order to render the IP-4 leakproof it is suggested that a dab of pipe-sealing compound be placed on the plug thread after final balancing.